



Carbon Door Card Install Instructions Rev. 03

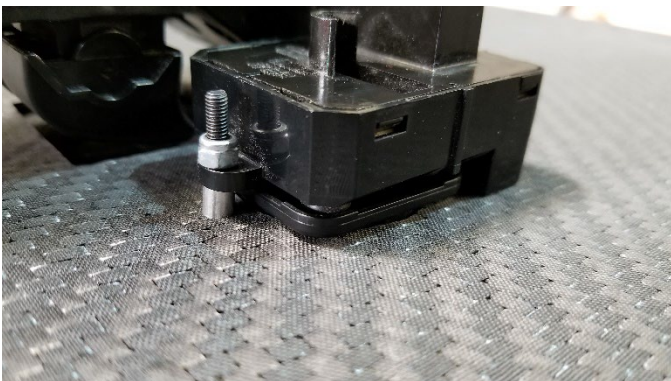
Honda S2000 2000-2009

Install:

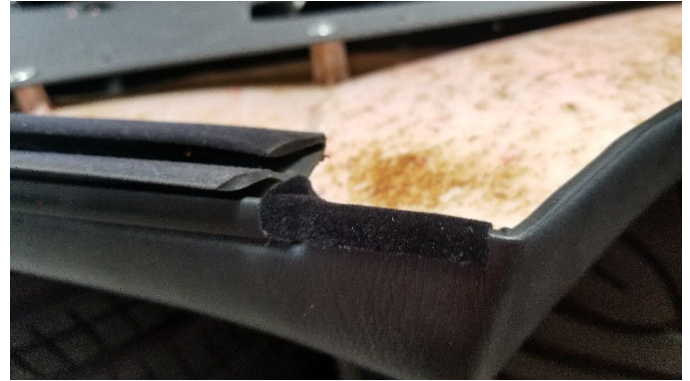
1. Remove interior door panels.
2. Separate the upper door panel from the rest of the door panel. The upper panel is secured with tapping screws and clips.



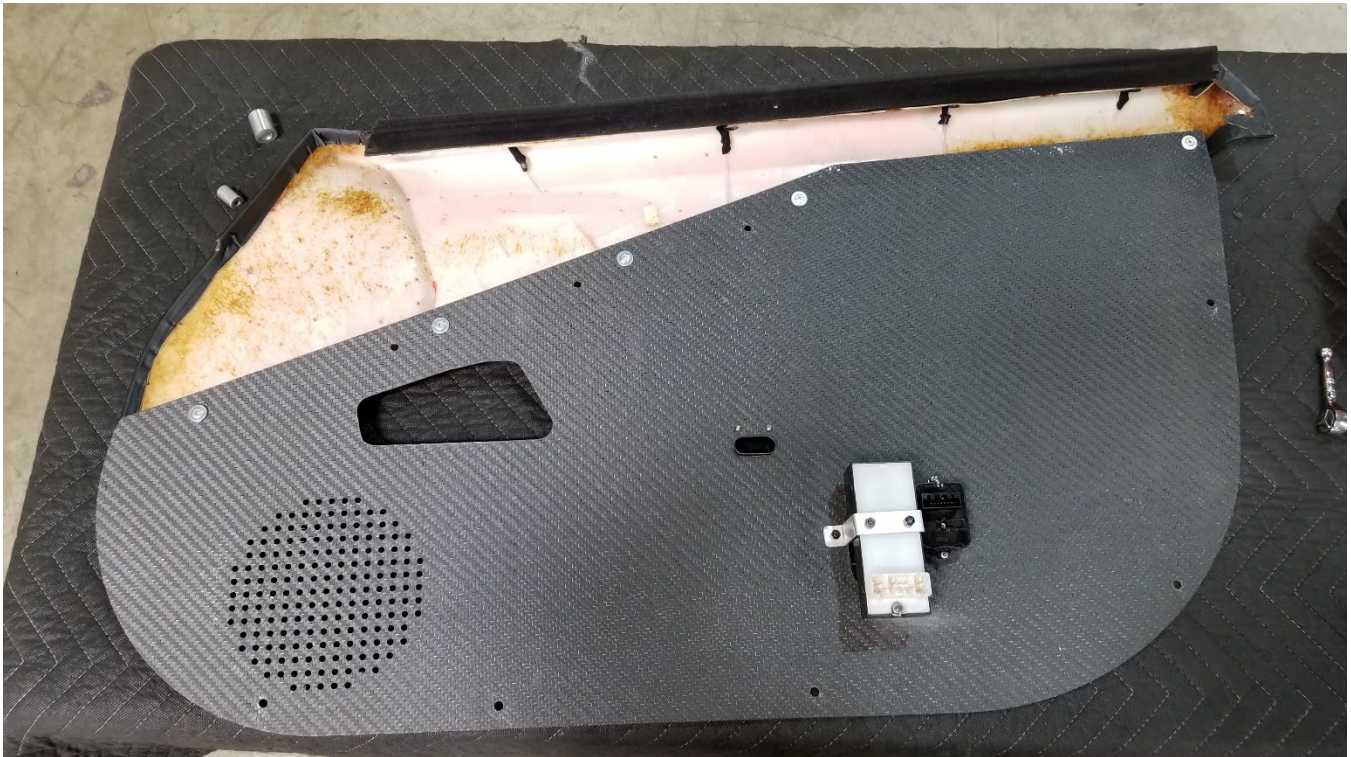
3. Remove the window and mirror switches from the door panel. Separate the switch bezels from the switches, they will not be reused.
4. Mount the window and mirror switches to the back of the new door panels as pictured. Mount the door pull rosettes.



5. Apply a small amount of felt tape to the locations indicated below.



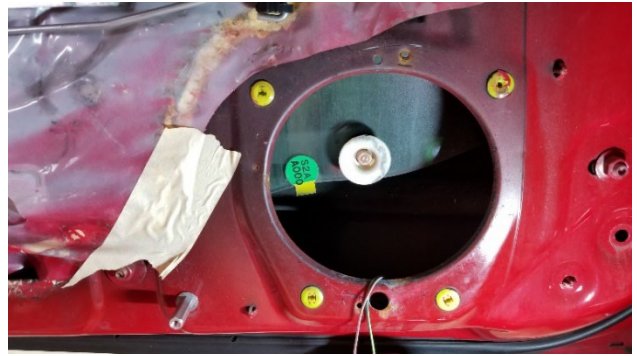
6. Mount the new door panels to the original upper sections. Reuse the existing hardware from the original panel. Note that there is a different set of mounting holes for AP1 and AP2 door panels. The rear most mounting hole is not used on AP2.



- 7.
8. Apply the foam tape to the back side of the plate as below.

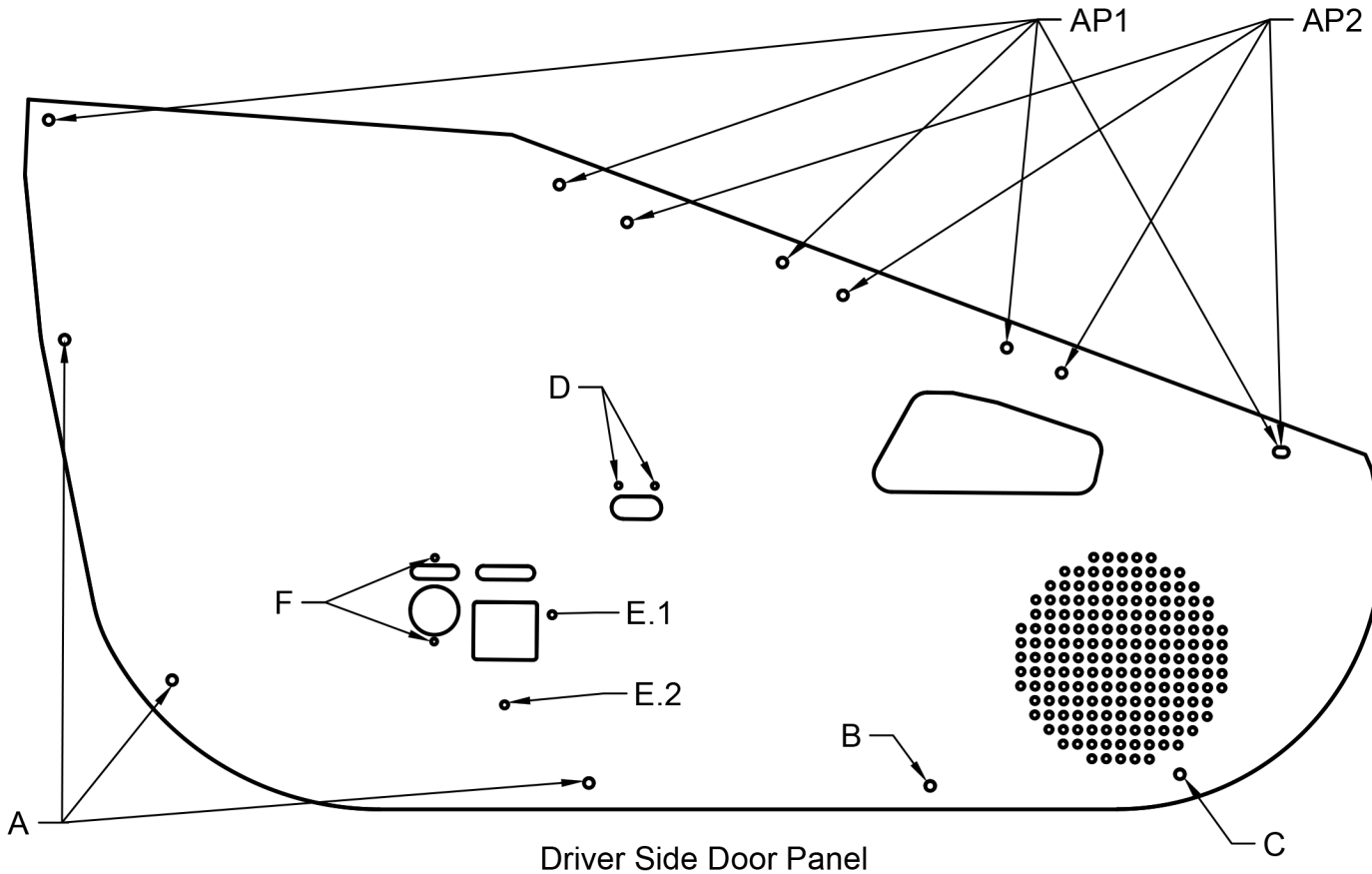


9. Install the provided offset spacers. The hole nearest the speaker can be reached by removing the speaker. Reinstall the speaker after installing the spacer. Leave the bottom forward most screw out. This will be replaced later in the install. Before installing the new door panel assembly, the door should be cleaned of any glue and deadening that may show. The OE Plastic shrouding may be removed or taped back for a cleaner install.

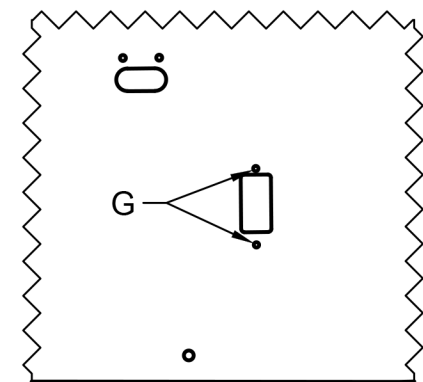


DO NOT SCALE

S2000 Carbon Door Panel

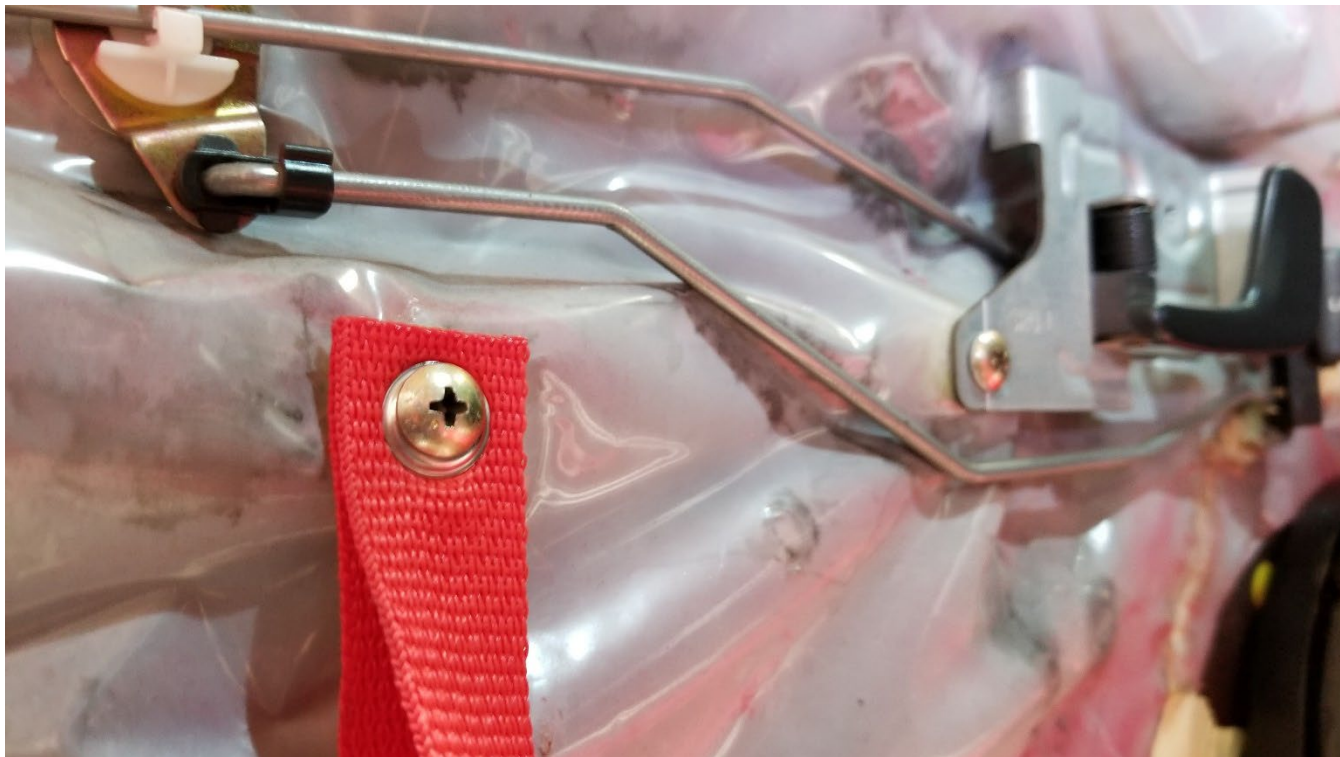


A	20mm Threaded Standoff
B	10mm Spacer, 25mm Threaded Standoff
C	M5x50 tapping Screw, 1" Spacer
D	M3 tapping screw, rosette
E1	Z Bracket Assembly
E2	M5x50 screw, 25mm spacer
F	M3x20 screw, 8mm spacer
G	M3x30 screw, 18mm spacer



Passenger Side Window Switch

10. Install the pull strap to the location indicated below. Reuse the original screw from the OE door handle.



11. Slide the top panel section into the door first. Lift the bottom of the panel outward slightly and plug in the mirror and window controls.



12. Use the #10 tapping screw and 25mm #10 spacer for the mounting hole closest to the speaker. The bottom forward most speaker mount is used. Use the 20mm M5 screws and 10mm spacer for the next mounting point back. Fasten the remaining mounting holes using the 10mm M5 screws.



13. Fasten the remaining mounting holes using the 10mm M5 screws.
14. Reinstall the door release lever bezel reusing original hardware.



**Thank you for your order! Tag us on Instagram!
@EVSTuning | #evstuning**