



# Front Tow Hook Installation Guide

## Honda Civic Type-R FL5 2023+

v1.0 01/19/24

**WARNING:** This product can expose you to chemicals including arsenic, which is known to the State of California to cause cancer. For more information, go to [www.P65Warnings.ca.gov](http://www.P65Warnings.ca.gov)

For off-road use only.

Professional installation is recommended.

**Product:** EVS-FL5-TOWF-RD/YW

**Fitment:** Honda Civic Type-R FL5 2023+

**Installation Time:** Approximately 1~2 hour

### Parts List

QTY	Description
1	FL5 Front Tow Adapter
1	Folding Tow Ring
2	M10x1.25 120mm Hex Bolt
2	M10x1.25 Lock Nut
4	M10 Washer
1	Brake duct cutting template

## Installation:

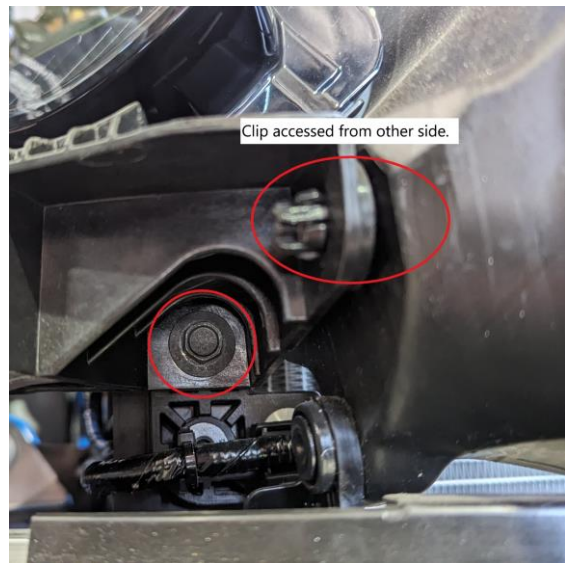
1. Remove the front bumper cover. The following photos highlight clips and screws that will need to be removed from both sides. The bumper seam above the headlights slides up and out to release. The area below the headlight is sprung tensioned on tabs.







2. Remove the passenger(right) side headlight. The following photos highlight screws and clips holding the headlight in.



3. Remove the passenger(right) side brake duct and trim using the included templates:

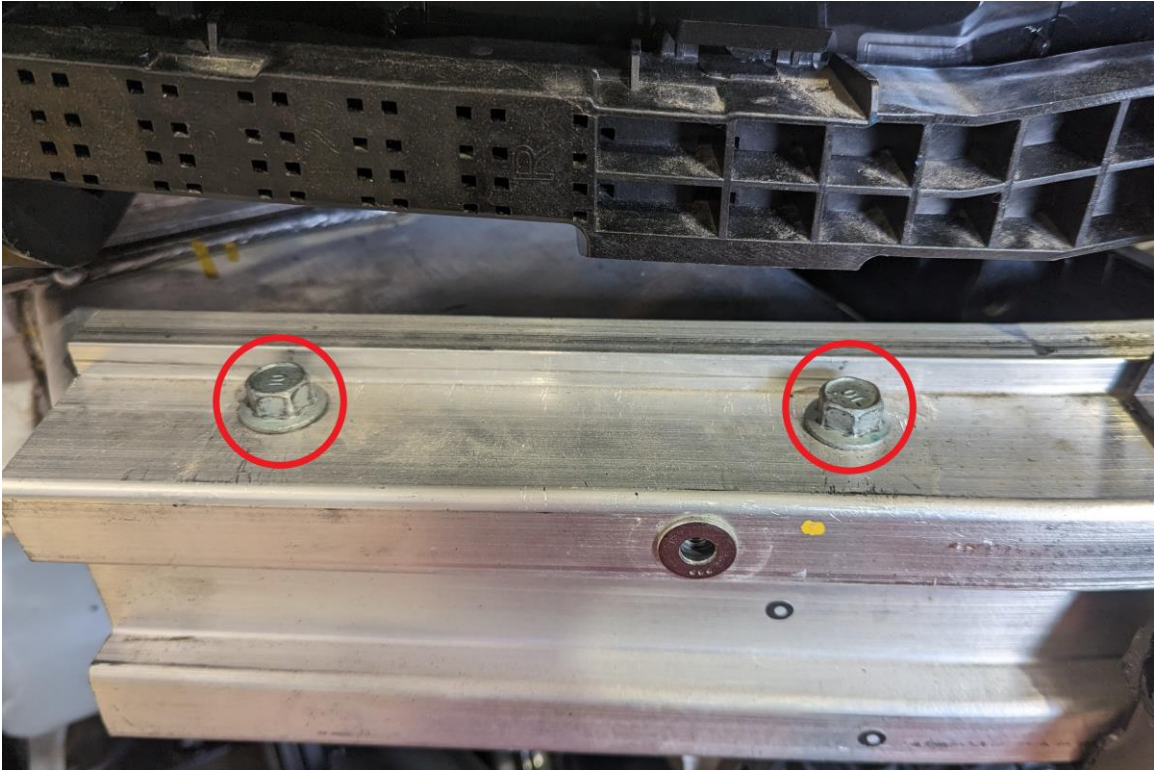


4. Remove the plastic air guide and trim as shown below:





5. Remove the two long M10 bolts holding the main crash beam in.

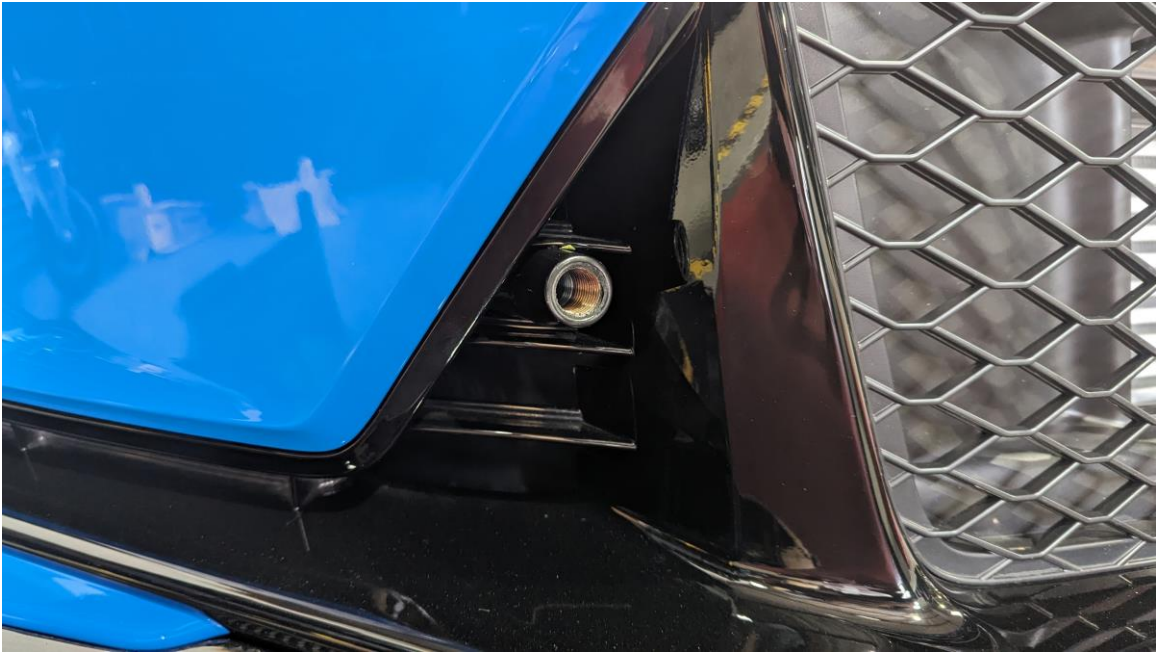


6. Slide the EVS Tuning Tow adapter over the crash beam and fasten using the included 120mm long M10 bolts. Torque to 32 ft-lbs. Then install the M10 lock nuts and washers over the protruding end at the bottom.



7. Reinstall the upper air guide and brake duct.

8. Reinstall the passenger headlight.
9. Reinstall the front bumper cover. It is helpful to guide the passenger side first. The tow ring receptacle passes through the second brake duct slot from the top.



10. Install the EVS Tuning folding tow ring. The locking nut is 24mm wide.

**Thank you for your order!**  
**Tag us on Instagram!**  
**@EVSTuning | #evstuning**