



Aero Front Lip and Splitter Install

Honda Civic Type R 2017+

Estimated Install Time: ~30min

Tools Required:

- 10mm Socket and Ratchet
- 10mm wrench
- Pop Clip Tool
- Phillips Head Screwdriver
- Flat Head Screwdriver
- 4mm Hex Tool
- ¼" or 6mm Drill Bit and Drill(Splitter only)

Install Procedures:

1. Properly lift and support the front end of the car, and remove the front wheels.
2. Remove the 2 10mm bolts and popclips from the undertray. If you are installing a splitter, the rubber air dam may be removed as well.



3. Remove the 4 Phillips head screws on the bumper edge and pull back the liner. Remove the two 10mm shoulder bolts holding the OE Lip in. Repeat for the other side.



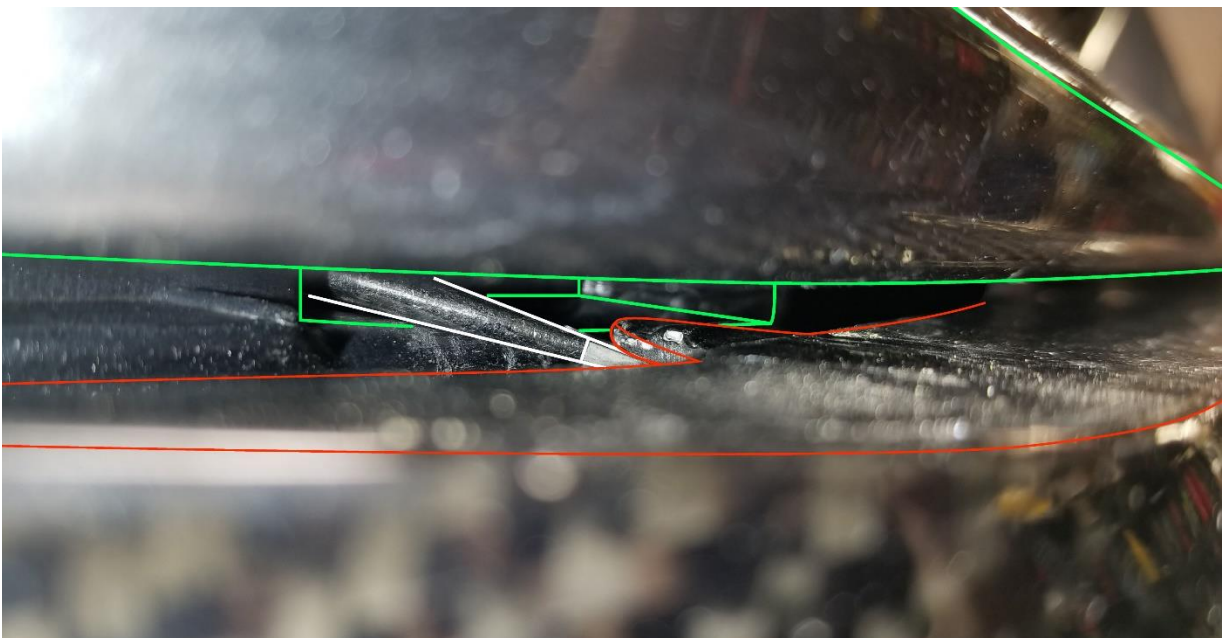
4. Remove the two 10 mm bolts in the side of the bumper.



5. Separate the lower part of the front grill from the lip. The lip and grill are connected by slotted clips as pictured below. The OE Lip can now be removed.



6. Transfer the nut clips from each end of the OE Lip to the new Lip
7. If you are installing a Front Lip with the Splitter, the splitter will need to be bolted to the spoiler before installing on the car. There are 7 dimples marked on the underside of the spoiler to be drilled out. Attach the splitter to the spoiler using the provided 20mm M6x1.0 bolts. Use the smaller washer on the splitter side and the larger washer on the inside lip.
8. While installing the new front lip, ensure that the small tabs on the lip line up with the slots in the bumper. If needed a small screwdriver may be used to lift the tab and guide it in from the back side of the bumper.



9. If you are installing a lip with the splitter, a part of the undertray will need to pass between the splitter and lip before the lip can seat properly. Apply a strip of protective tape before doing so to protect the finish on the splitter.



10. Reinstall the two bolts from step 4 on each end of the bumper.
11. If you are installing a lip with a splitter, install the 25mm M6 bolts into the hole pictured below. The nut clip on the undertray side may need to be repositioned for the hole to line up.



12. Reinstall the remaining screws and clips.

