



Side Skirt Lip Install

Toyota GR Supra 2020+

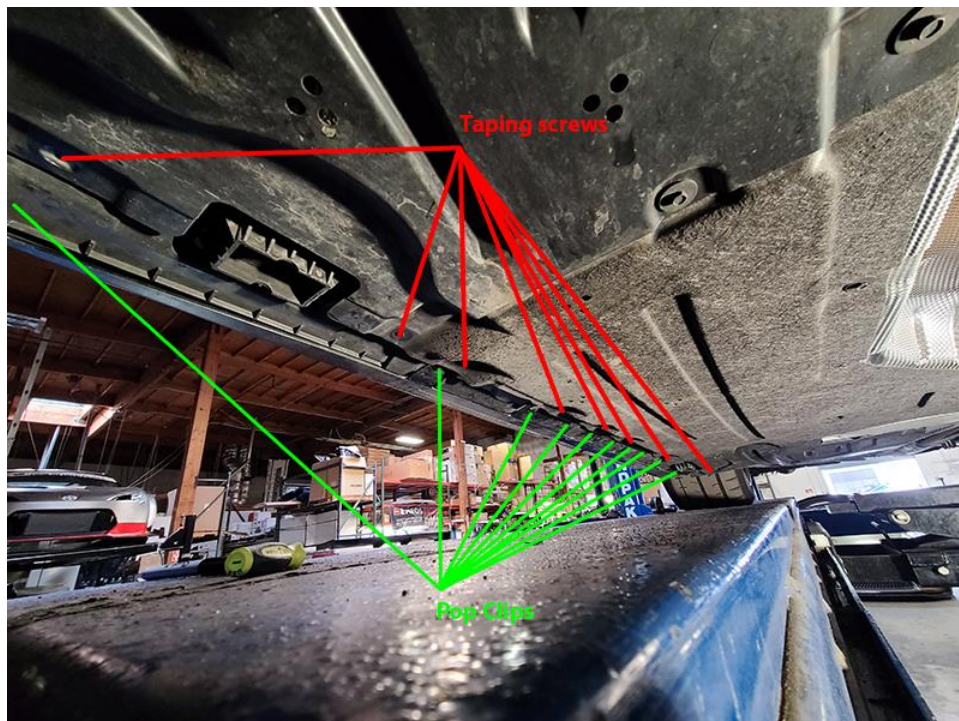
Professional installation recommended.

EVS Tuning is not responsible for injury or damage to persons or vehicles. Install at your own risk.

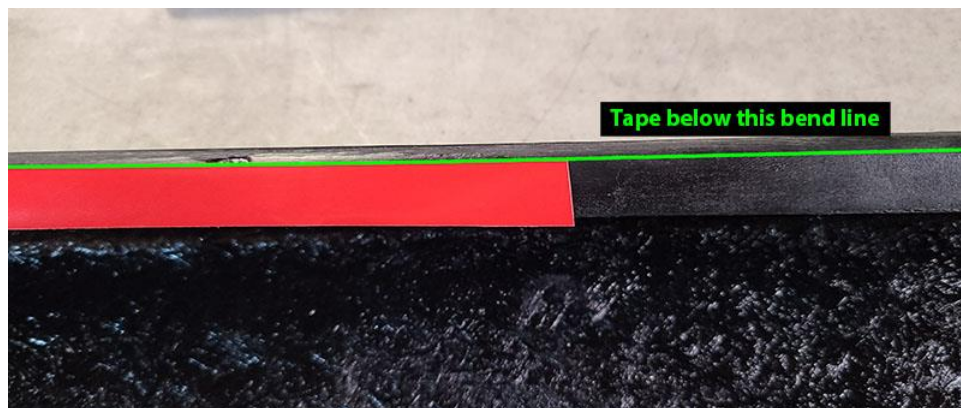
PLEASE READ THE FULL INSTALLATION INSTRUCTIONS BEFORE PROCEEDING

Install Procedures:

1. Properly lift and support the car. Take care to keep the area around the lift points to be clear from obstruction. Remove all 4 wheels.
2. Remove the OE side skirt. The top section is secured by tabs on top and pop clips on the bottom.
3. Remove the 9 8mm head screws that secure part of the under panel to the side skirt.



4. Thoroughly clean and apply double sided tape to the following areas. Be careful to apply tape to the side skirt flange below the bend line.



5. Attach the bottom of the side skirt to the car with the provided screws and spacers.



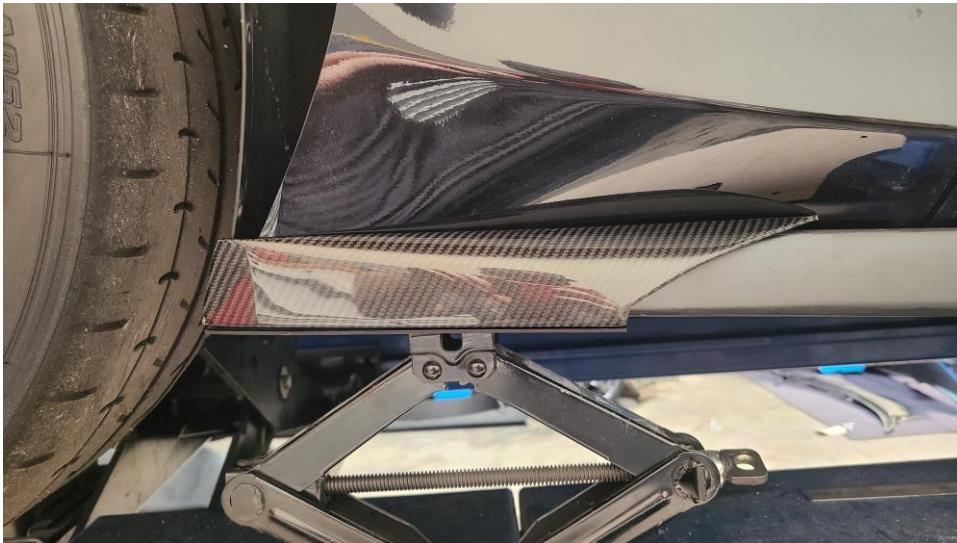
6. Clean the body surface is clean of oils, solvents and dirt before this step. Align the skirt to the body line and remove the red liner while applying pressure as you go. Keep pressure on the mounting surface for ~20 minutes.



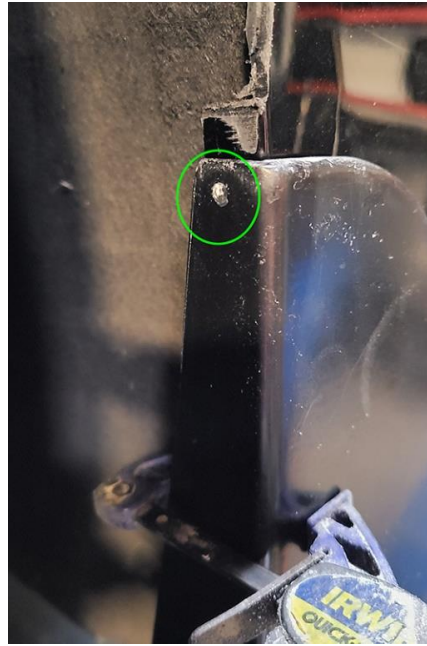
7. Assemble the carbon extension with the supplied support plate as shown.



8. Align the carbon extension as show and remove the red liner while applying pressure as you go. Keep pressure on the mounting surface for ~20 minutes.



9. Using a No.32 drill bit, drill a hole in the indicated areas. Fastening using the supplied tapping screws.



Thank you for your order!
Tag us on Instagram!
@EVSTuning | #evstuning