

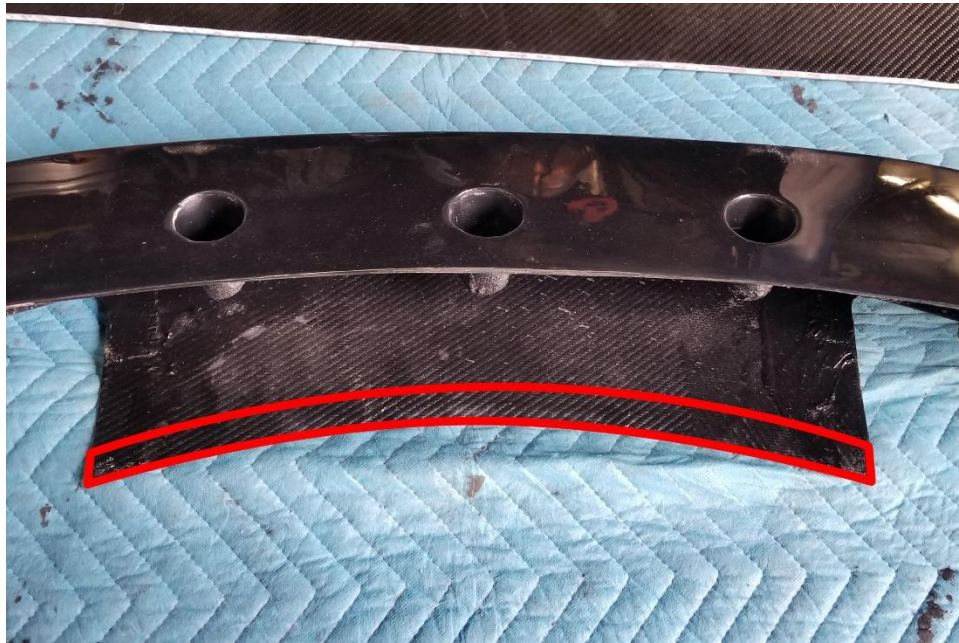


Aero Front Lip Install

Toyota GR Supra 2020+

Install Procedures:

1. Properly lift and support the front of the car.
2. Remove from the bottom, the 3 torx bolts for the center and the 6 pop clips holding the OE front lip in. Remove the two ends of the lip. The top line is snapped in via plastic clips. Do not remove the center section.
3. Apply double sided tape to the following areas:



4. Place the EVS Tuning lip over the OE Center lip. Using tape, indicate on bumper all the areas that will be adhered with double sided tape. Remove the lip and clean the areas indicated.
5. Install the new lip with the original clips and bolts first. Carefully peel back the double stick tape and apply pressure to the taped areas.

Note: Please be careful with your new EVS Tuning Aero Front lip as the front overhang is considerably further forward then OE.



Thank you for your order!
Tag us on Instagram!
@EVSTuning | #evstuning