



GTLM Lock Pin Installation Guide

Toyota GR Supra 2020+

v1.0 02/01/24

WARNING: This product can expose you to chemicals including arsenic, which is known to the State of California to cause cancer. For more information, go to www.P65Warnings.ca.gov

For off-road use only.

Professional installation is recommended.

Product: EVS-A90-GTLM-02

Fitment: Toyota GR Supra (A90/A91) 2020+

Installation Time: Approximately 2 hours

Parts List

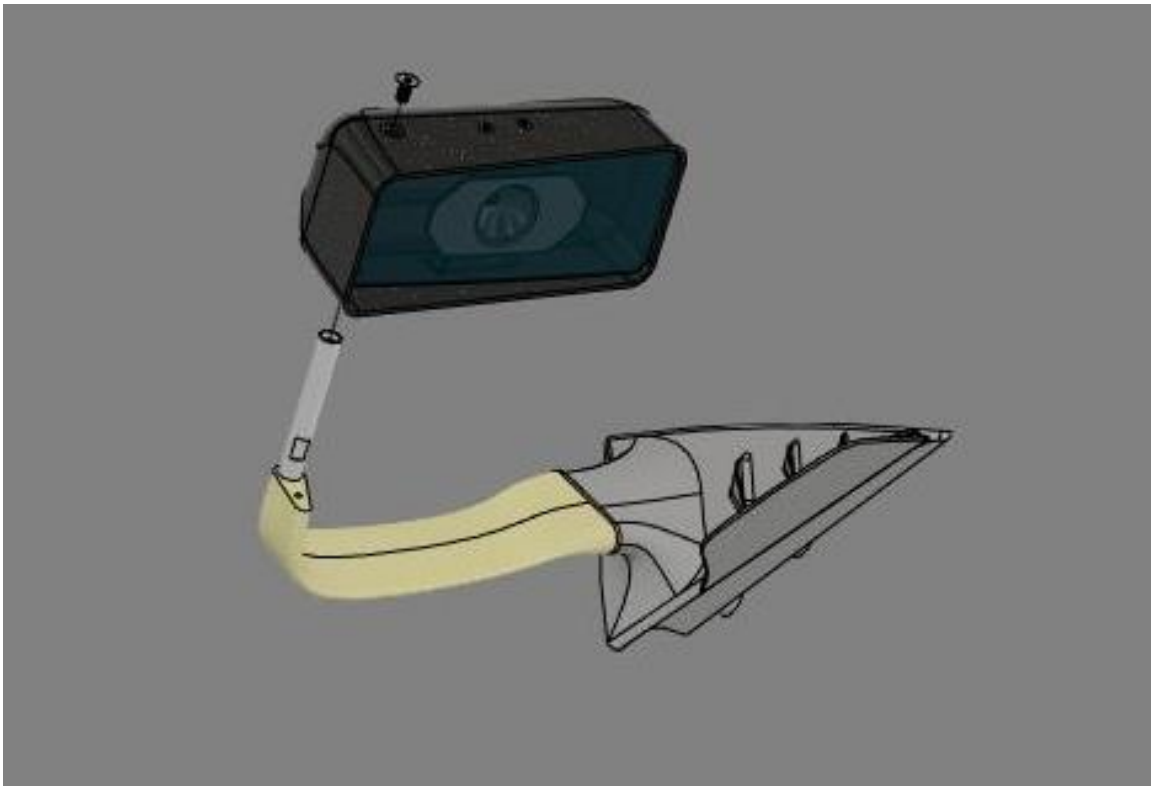
QTY	Description
1	A90 Supra Base Left
1	A90 Supra Base Right
6	M6 Screws
2	0.125" Pin
1	Drill Template

Installation:

1. Install the mirror base and adjust the mirror housing and glass so that driver can safely see from the seated and belted driving position. Mark both mirror positions using a piece of tape.



2. Remove the mirror housing from the base arm by unscrewing the M5 countersunk screw at the top. The housing will slide out once the screw is removed.



3. Align the provided drill template to the tape mark from the previous step. Drill the hole using a 1/8" drill bit.



4. Install the provided dowel pin in the hole near the stem base.



5. Reassemble the mirror housing with the hole aligned to the pin at the stem base.

Thank you for your order!
Tag us on Instagram!
@EVSTuning | #evstuning